

# Beveling machine

# B60S



## Technical data

	Metric	Imperial
Spindle speed	1,675 - 2,850 rpm	
Max. bevel width	22 mm (45°)	7/8" (45°)
Bevel angle	0 - 60°	
Pipe diameter	> Ø 150 mm	> Ø 5 15/16"
Length	415 mm	16 5/16"
Width	375 mm	14 3/4"
Height	268 mm	10 9/16"
Weight	24.5 kg	54 lbs
Motor power	1,800 W	16.4 A
Voltage	110 - 120 V AC / 60 Hz	220 - 240 V AC / 50 - 60 Hz

## Features:



Adjustable  
speed



Overload  
protection



Width:  
22 mm / 7/8"  
(45°) max.

## Benefits:

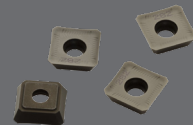
- Powerful high-efficiency motor
- Clear indicator for angle-setting, up to 60°
- Suitable for pipe material > Ø 5 15/16" (150 mm)
- Extremely suitable for stainless steel
- Wide and soft handles



Stainless steel  
guide plate assembly  
Code: B60.1020S



Milling head  
Code: B60.0027



Cutting plates, 10 pieces  
Code: LKS.15